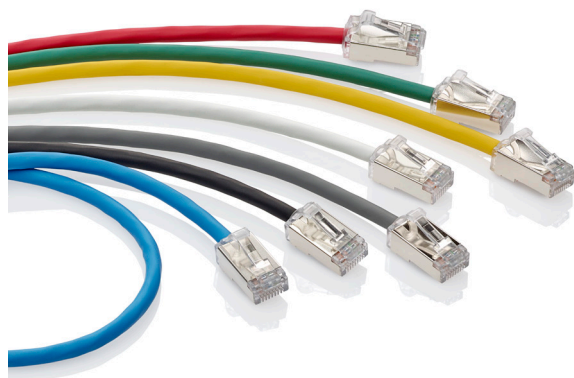


Cat 6A Small Diameter High-Flex Patch Cords

APPLICATION

Cat 6A Small Diameter High-Flex Patch Cords are designed to be used in 10 Gigabit applications for all frequencies from 1 to 500 MHz. Patch cords offer flexible, high density patching. Patch cables provide small 0.185" (4.7mm) OD and support high-speed data applications. They reduce patch cord density in a 24-port patch panel by 25 percent when compared to typical Cat 6A patch cords.



SPECIFICATION

Patch cords shall meet or exceed electrical transmission performance requirements of links and channels as described in ANSI/TIA-568.2-D (Cat 6A) and ISO/IEC 11801-1 (Class E_A) and EN 50173-1 (Class E_A). The patch cords shall be 28 AWG, shielded, twisted pair, stranded conductor construction with a standard 8-position modular plug on both ends. Plug contacts shall be plated with minimum of 50 micro inches of gold. Patch cords shall have an outer diameter of 0.185" (4.7 mm) and shall be available in white, yellow, gray, black, red, green and blue.

FEATURES

- Available in white, yellow, gray, black, red, green and blue
- Available in lengths from 1-50 feet
- Power over Ethernet compatible
- Ideal for use with high-density switches, routers, and other electronics
- Bend radius is a narrow 0.74 inches, versus 1.0 inch for typical Cat 6A patch cords
- Accepts clip-on colored boot markers for network identifications

DESIGN CONSIDERATIONS

- Designed to provide connectivity solution for 10 Gigabit applications
- Available in a variety of colors for color-coding or organization
- Channel Length:
 - Supports 96-meter channels that include 90-meter permanent links
 - Supports 93-meter channels with 10 meters of patch cords included in the channel
- Under PoE at 90 watts, maximum bundle size is 12 cables with a separation of 1.5 inches from outer edge to outer edge of cable bundles for 28 AWG cables installed in air and a maximum ambient temperature of 45 °C (113 °F), as defined in TIA TSB-184-A

STANDARDS & REGULATIONS

- ANSI/TIA-568.2-D (Cat 6A)
- ISO/IEC 11801-1 (Cat 6A)
- EN 50173-1 (Cat 6A)
- ISO EN50173-1:2002 (Cat 6A)
- ANSI/TIA-1096-A (formerly FCC Part 68)
- UL 444 CM Rated
- IEC 60332-1 (LSHF/LSZH)
- IEEE 802.3bt PoE Type 1 (15.4 Watts) formerly 802.3af, Type 2 (30 Watts) formerly 802.3at, Type 3 (60 Watts), Type 4 (90 Watts)
- Cisco UPoE (60 Watts), UPoE+ (90 Watts)
- Power over HDBaseT™ PoH (95 Watts)
- cULus Listed (UL 1863)
- RoHS 3

MECHANICAL SPECIFICATIONS

Dimensions:	1 - 50 foot lengths (0.3 - 15 m)
Materials:	28 AWG, stranded U/FTP, standard modular non-keyed, 8-position, 8-conductor plug, 94V-0 rated
Cable Outer Diameter:	0.185 inches (4.7 mm)
Bend Radius:	0.74 inches (18.8 mm)

WARRANTY INFORMATION

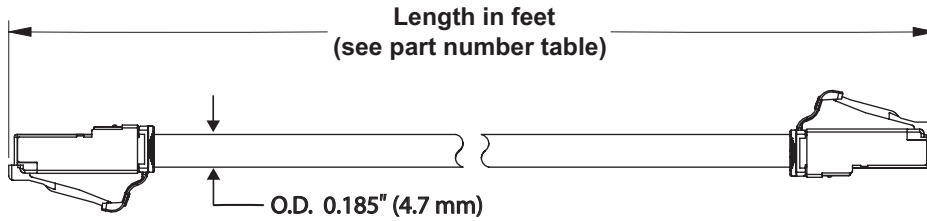
For Leviton product warranties, go to leviton.com/warranty

PRODUCT SPECIFICATIONS

H6A10-XX*



H6A10-XX*



PART NUMBERS

Description	Part No.
Cat 6A Small Diameter High-Flex Patch Cords	H6A10-xx*

XX = Length: 1' (01) - 50' (50)

* = colors: White (W), Yellow (Y), Gray (S), Black (E), Red (R), Green (G), Blue (L)

CAT 6A SMALL DIAMETER HIGH-FLEX PATCH CORDS

Description	White	Yellow	Red	Blue	Green	Gray	Black
Patch Cord, 1 foot (0.3 m)	H6A10-01W	H6A10-01Y	H6A10-01R	H6A10-01L	H6A10-01G	H6A10-01S	H6A10-01E
Patch Cord, 2 feet (0.6 m)	H6A10-02W	H6A10-02Y	H6A10-02R	H6A10-02L	H6A10-02G	H6A10-02S	H6A10-02E
Patch Cord, 3 feet (0.9 m)	H6A10-03W	H6A10-03Y	H6A10-03R	H6A10-03L	H6A10-03G	H6A10-03S	H6A10-03E
Patch Cord, 4 feet (1.2 m)	H6A10-04W	H6A10-04Y	H6A10-04R	H6A10-04L	H6A10-04G	H6A10-04S	H6A10-04E
Patch Cord, 5 feet (1.5 m)	H6A10-05W	H6A10-05Y	H6A10-05R	H6A10-05L	H6A10-05G	H6A10-05S	H6A10-05E
Patch Cord, 6 feet (1.8 m)	H6A10-06W	H6A10-06Y	H6A10-06R	H6A10-06L	H6A10-06G	H6A10-06S	H6A10-06E
Patch Cord, 7 feet (2.1 m)	H6A10-07W	H6A10-07Y	H6A10-07R	H6A10-07L	H6A10-07G	H6A10-07S	H6A10-07E
Patch Cord, 8 feet (2.4 m)	H6A10-08W	H6A10-08Y	H6A10-08R	H6A10-08L	H6A10-08G	H6A10-08S	H6A10-08E
Patch Cord, 9 feet (2.7 m)	H6A10-09W	H6A10-09Y	H6A10-09R	H6A10-09L	H6A10-09G	H6A10-09S	H6A10-09E
Patch Cord, 10 feet (3.0 m)	H6A10-10W	H6A10-10Y	H6A10-10R	H6A10-10L	H6A10-10G	H6A10-10S	H6A10-10E
Patch Cord, 11 feet (3.3 m)	H6A10-11W	H6A10-11Y	H6A10-11R	H6A10-11L	H6A10-11G	H6A10-11S	H6A10-11E
Patch Cord, 12 feet (3.7 m)	H6A10-12W	H6A10-12Y	H6A10-12R	H6A10-12L	H6A10-12G	H6A10-12S	H6A10-12E
Patch Cord, 13 feet (3.9 m)	H6A10-13W	H6A10-13Y	H6A10-13R	H6A10-13L	H6A10-13G	H6A10-13S	H6A10-13E
Patch Cord, 14 feet (4.3 m)	H6A10-14W	H6A10-14Y	H6A10-14R	H6A10-14L	H6A10-14G	H6A10-14S	H6A10-14E
Patch Cord, 15 feet (4.6 m)	H6A10-15W	H6A10-15Y	H6A10-15R	H6A10-15L	H6A10-15G	H6A10-15S	H6A10-15E
Patch Cord, 16 feet (4.9 m)	H6A10-16W	H6A10-16Y	H6A10-16R	H6A10-16L	H6A10-16G	H6A10-16S	H6A10-16E
Patch Cord, 17 feet (5.2 m)	H6A10-17W	H6A10-17Y	H6A10-17R	H6A10-17L	H6A10-17G	H6A10-17S	H6A10-17E
Patch Cord, 18 feet (5.5 m)	H6A10-18W	H6A10-18Y	H6A10-18R	H6A10-18L	H6A10-18G	H6A10-18S	H6A10-18E
Patch Cord, 19 feet (5.8 m)	H6A10-19W	H6A10-19Y	H6A10-19R	H6A10-19L	H6A10-19G	H6A10-19S	H6A10-19E
Patch Cord, 20 feet (6.1 m)	H6A10-20W	H6A10-20Y	H6A10-20R	H6A10-20L	H6A10-20G	H6A10-20S	H6A10-20E

Note: Lengths from 3–20 feet are component rated; all other lengths are channel rated

For further support information, visit leviton.com/ns/support

NETWORK SOLUTIONS GLOBAL HEADQUARTERS

Bothell, WA, USA | leviton.com/ns
(800) 824 3005 / +1 (425) 486 2222 | appeng@leviton.com

NETWORK SOLUTIONS EUROPEAN HEADQUARTERS

Glenrothes, UK | leviton.com/ns/emea
+44 (0) 1592 772124 | customerserviceeu@leviton.com

Leviton is dedicated to designing, developing and manufacturing sustainable high-performance structured cabling and speciality cabling solutions. Network Solutions products are available worldwide in over 100 countries. Visit us online to learn more.